



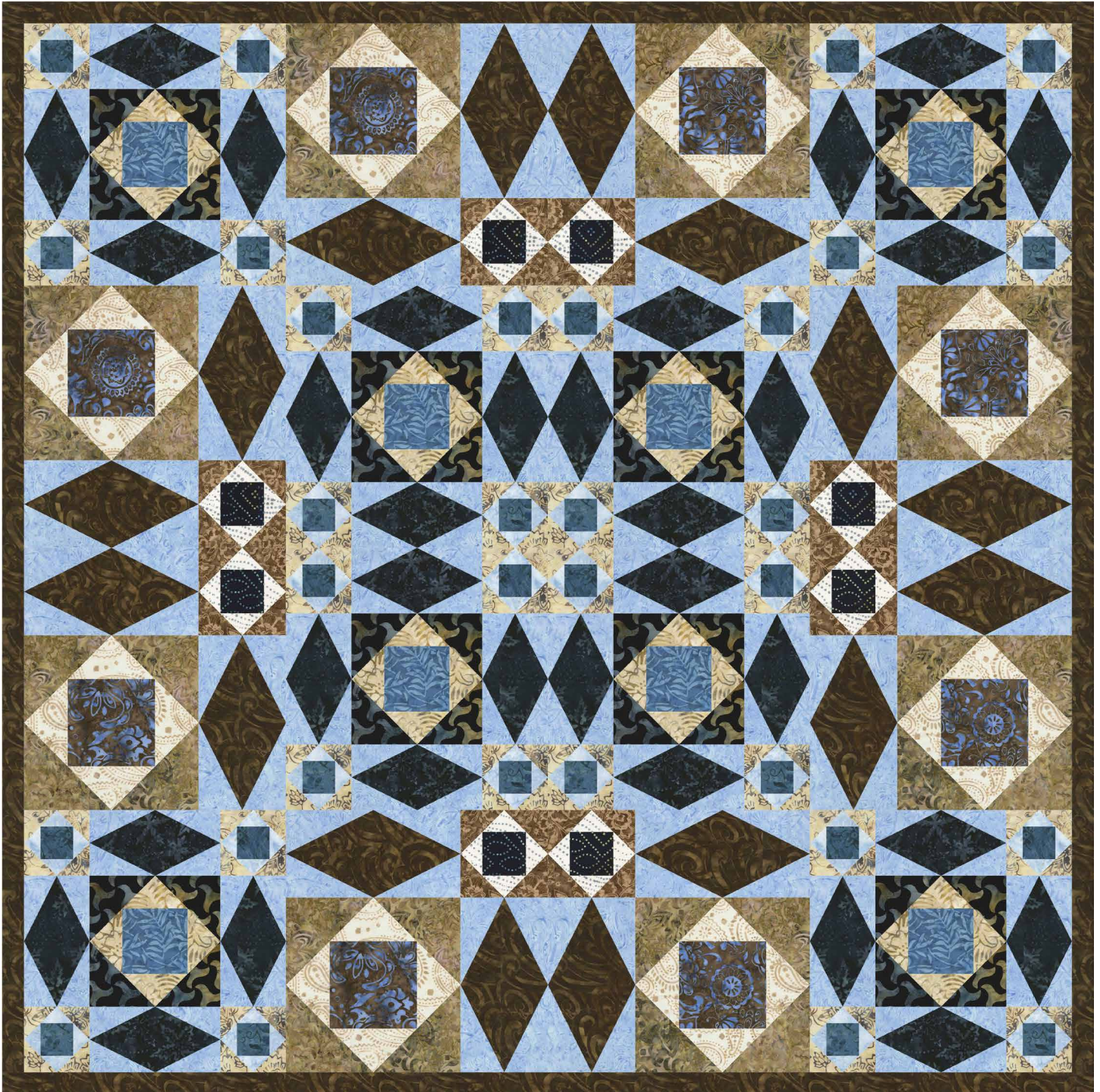
BROOME STREET PATTERNS



# Tonga Boathouse

*daniela stout*

## Tide Lines by Nan Baker



A free Broome Street pattern for this quilt is available on our website.

50 1/2" square



BROOME STREET PATTERNS



# Tonga Boathouse

*daniela stout*

## Tide Lines by Nan Baker

### Fabric Requirements & Kitting Chart

Fabric	Yardage for 1 Quilt	Bolts for 12 Kits	Bolts for 24 Kits	Bolts for 36 Kits
Tonga-B3313 Nature	1/3	1	1	1
Tonga-B5406 Laguna	7/8	1	2	3
Tonga-B6283 Stone	1/4	1	1	1
Tonga-B6249 Lake	1/4	1	1	1
Tonga-B6284 Ebony	1/3	1	1	1
Tonga-B4898 Marine	1/4	1	1	1
Tonga-B4550 Sky	1/3	1	1	1
Tonga-B9849 Mocha	1/4	1	1	1
Tonga-B6252 Toffee	1/3	1	1	1
Tonga-B6285 Jet	1/8	1	1	1
Tonga-B6907 Parchment	1/4	1	1	1
Tonga-B4395 Cocoa	1/4	1	1	1
Tonga-B5266 Air	1/4	1	1	1
Tonga-B4586 Fudge	5/8	1	2	2
Tonga-B5409 Deep <i>Includes 1/2 yd binding</i>	1 5/8	2	3	5
Backing	3 1/4			

*Total yardage for 1 quilt (not including backing): 6 1/3*

Tonga bolt estimates are based on a standard 14-yard bolt. Estimates shown with an asterisk (\*) would require exactly 14 yards or an exact multiple of 14 yards. In these instances, you may wish to order an extra bolt.

Estimates also assume that each kit will have only one cut of each fabric. It may be possible to use fewer bolts for some fabrics if you don't mind having two cuts of one fabric in a single kit.