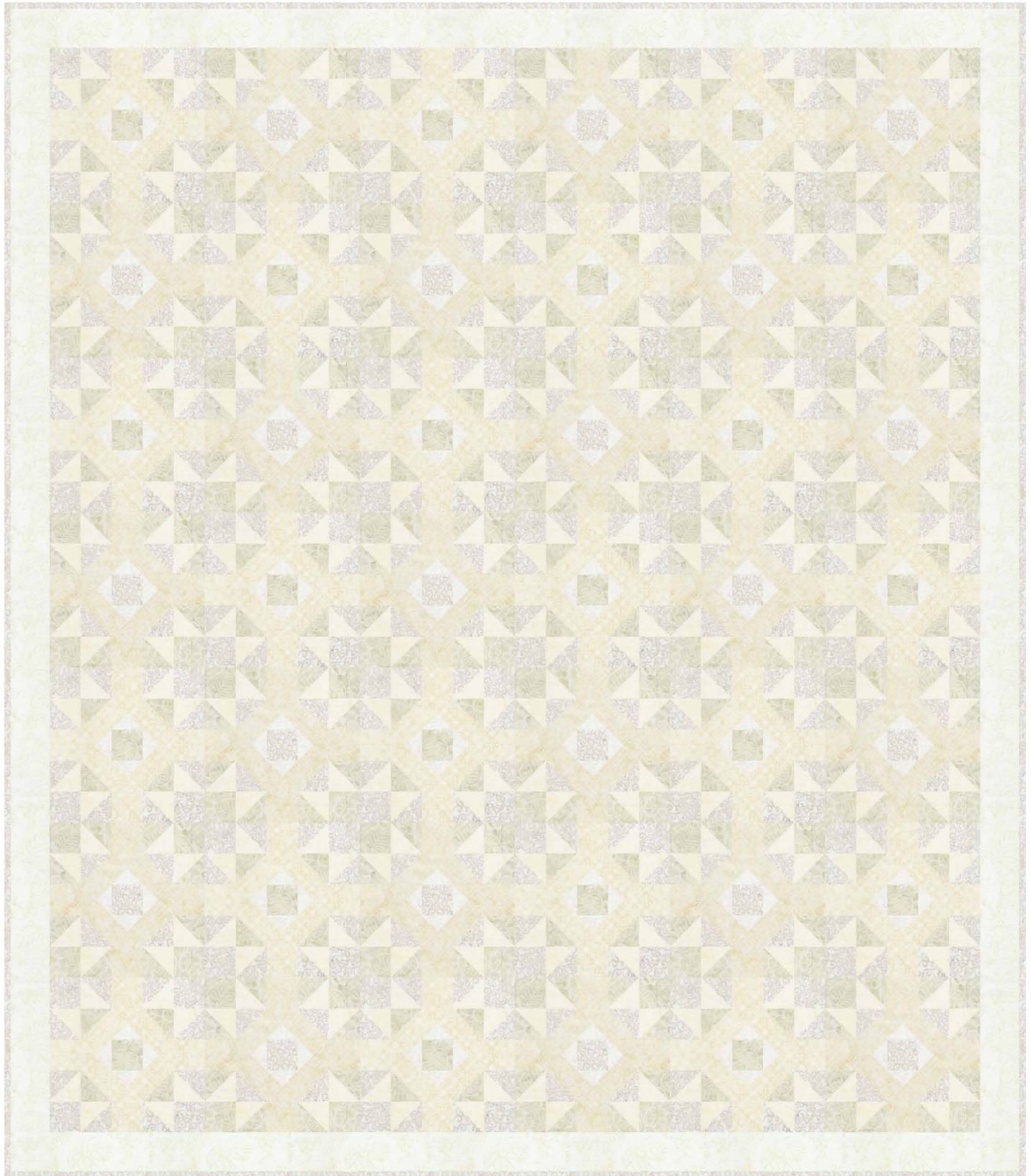


**TIMELESS
TREASURES**



Tonga Cashmere

Interwoven by Denise Russell,
Pieced Brain



78" x 90"



Tonga Cashmere

Interwoven by Denise Russell,
Pieced Brain

Fabric Requirements & Kitting Chart

Fabric	Yardage for 1 Quilt	Bolts for 12 Kits	Bolts for 24 Kits	Bolts for 36 Kits
Tonga-B6300 Pure	1/2	1	1	2
Tonga-B6832 Air	1	1	2	3
Tonga-B6285 Buff	1 3/8	2	3	4
Tonga-B6828 Flesh	1 3/8	2	3	4
Tonga-B6829 Almond	1 3/8	2	3	4
Tonga-B6826 Foam	1 3/4	2	3*	5
Tonga-B2266 Fresh	2 3/8	3	5	8
Backing	8 1/4			

Total yardage for 1 quilt (not including backing): 9 3/4

Tonga bolt estimates are based on a standard 14-yard bolt. Estimates shown with an asterisk (*) would require exactly 14 yards or an exact multiple of 14 yards. In these instances, you may wish to order an extra bolt.

Estimates also assume that each kit will have only one cut of each fabric. It may be possible to use fewer bolts for some fabrics if you don't mind having two cuts of one fabric in a single kit.

The Interwoven pattern is available in October 2018 from:

Denise Russell, Pieced Brain Quilt Designs

derussell22@gmail.com

www.piecedbrain.com

Please refer to pattern when kitting.