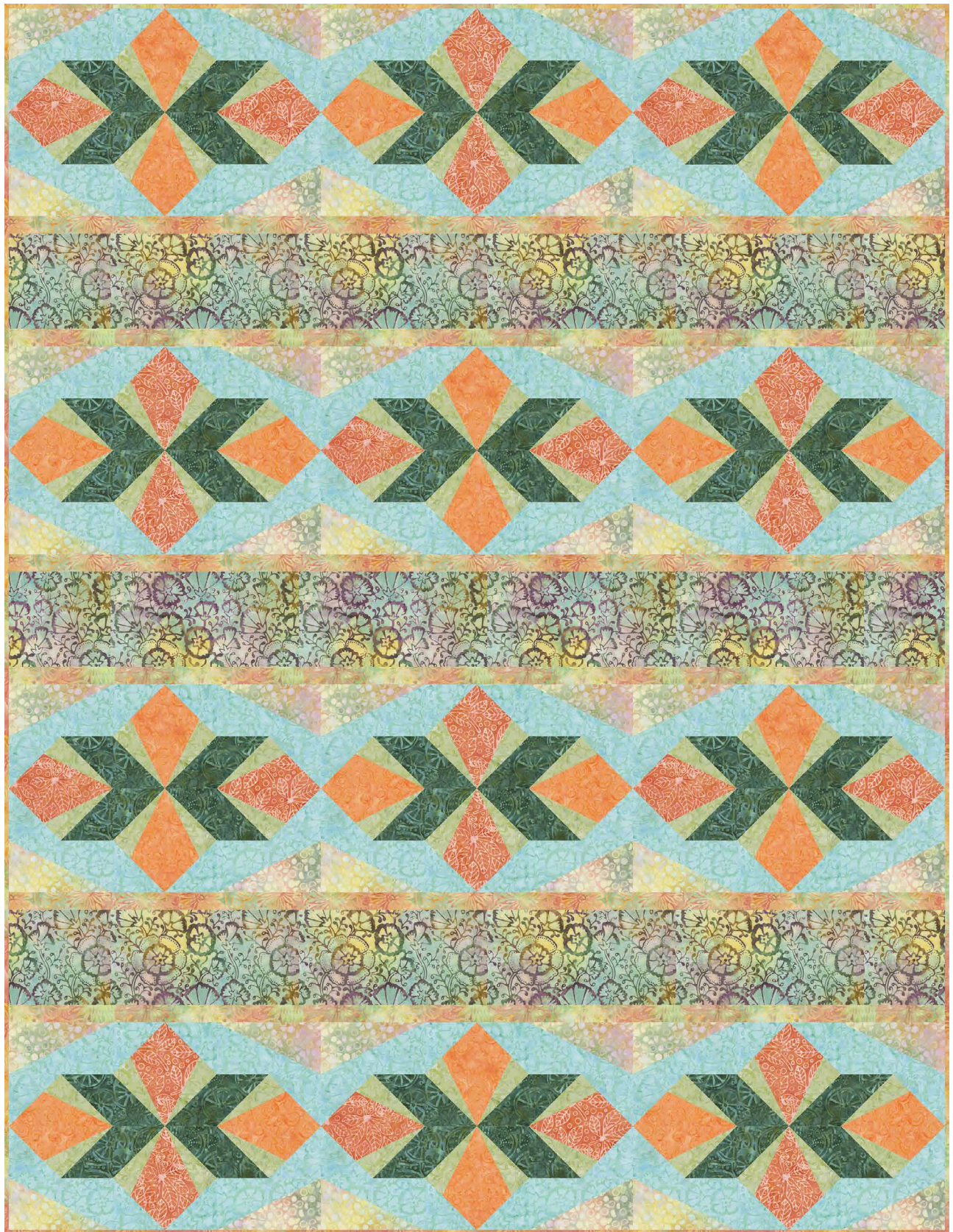


**TIMELESS
TREASURES**



Tonga Patina

Lily's Quilt by Heidi Pridemore,
The Whimsical Workshop



54" x 70 1/2"

Tonga Patina

Lily's Quilt by Heidi Pridemore,
The Whimsical Workshop

Fabric Requirements & Kitting Chart

Fabric	Yardage for 1 Quilt	Bolts for 12 Kits	Bolts for 24 Kits	Bolts for 36 Kits
Tonga-B7160 Frolic	1 5/8	2	3	5
Tonga-B7160 Matcha	1 1/4	2	3	4
Tonga-B7165 Melon	3/4	1	2	2
Tonga-B6948 Emerald	1	1	2	3
Tonga-B7160 Fiji	1 2/3	2	3	5
Tonga-B7161 Coral	3/4	1	2	2
Tonga-B7162 Sorbet	7/8	1	2	3
Tonga-B5946 Punch (includes binding)	1	1	2	3
Backing	3 1/2			

Total yardage for 1 quilt (not including backing): 8 7/8

*This pattern is a future publication. While every effort is made to provide accurate yardage requirements, they are subject to change after editing. **Please refer to final pattern when kitting.***

Tonga bolt estimates are based on a standard 14-yard bolt. Estimates shown with an asterisk (*) would require exactly 14 yards or an exact multiple of 14 yards. In these instances, you may wish to order an extra bolt.

Estimates also assume that each kit will have only one cut of each fabric. It may be possible to use fewer bolts for some fabrics if you don't mind having two cuts of one fabric in a single kit.

The Lily's Quilt pattern is available Spring 2019 from:

Heidi Pridemore, The Whimsical Workshop

www.thewhimsicalworkshop.com

888-499-5715

Also available from EE Schenck and Checker Distributors