

TIMELESS  
TREASURES

BROOME STREET PATTERNS



# Tonga Rio

*Samba*

Designed by Denise Russell



Finished quilt size: 72½" x 86½"

## Fabric Requirements

$\frac{2}{3}$  yard each:

Tonga-B6387 Poppy

Tonga-B9229 Peapod

$\frac{5}{8}$  yard Tonga-B6302 Royalty

$\frac{7}{8}$  yard each:

Tonga-B6399 Orange

Tonga-B5410 Crush

Tonga-B4583 Bubblegum

Tonga-B4362 Blue

Tonga-B6401 Grape

Tonga-B1564 Rio

1 yard each:

Tonga-B6400 Pineapple

Tonga-B4882 Funhouse

$\frac{13}{8}$  yards Tonga-B6398 Flame (includes  
 $\frac{5}{8}$  yard for binding)

$\frac{5}{4}$  yards Tonga Rio backing fabric of your choice

Other supplies

81" x 95" batting

Plastic template material

## Cutting

*From Tonga-B6387 Poppy:*

- Cut three  $3\frac{1}{8}$ " x width-of-fabric (WOF) strips. Sub-cut forty-eight  $2\frac{1}{4}$ " x  $3\frac{1}{8}$ " rectangles (A).
- Cut two  $3\frac{1}{8}$ " x WOF strips. Sub-cut twenty-four  $2\frac{1}{2}$ " x  $3\frac{1}{8}$ " rectangles (D).
- Cut one  $4\frac{1}{2}$ " x WOF strip. Sub-cut eighteen  $2\frac{1}{4}$ " x  $4\frac{1}{2}$ " rectangles (C).

*From Tonga-B9229 Peapod:*

- Cut three  $3\frac{1}{8}$ " x WOF strips. Sub-cut forty  $2\frac{1}{4}$ " x  $3\frac{1}{8}$ " rectangles (A).
- Cut two  $3\frac{1}{8}$ " x WOF strips. Sub-cut twenty  $2\frac{1}{2}$ " x  $3\frac{1}{8}$ " rectangles (D).
- Cut one  $4\frac{1}{2}$ " x WOF strip. Sub-cut fifteen  $2\frac{1}{4}$ " x  $4\frac{1}{2}$ " rectangles (C).

*From Tonga-B6302 Royalty:*

- Cut two  $3\frac{1}{8}$ " x WOF strips. Sub-cut thirty-two  $2\frac{1}{4}$ " x  $3\frac{1}{8}$ " rectangles (A).
- Cut one  $3\frac{1}{8}$ " x WOF strips. Sub-cut sixteen  $2\frac{1}{2}$ " x  $3\frac{1}{8}$ " rectangles (D).
- Cut three  $2\frac{1}{4}$ " x WOF strips. Sub-cut thirty-two  $1\frac{7}{8}$ " x  $2\frac{1}{4}$ " rectangles (B) and sixteen  $2$ " x  $2\frac{1}{4}$ " rectangles (E).

*From Tonga-B6399 Orange:*

- Cut two  $3\frac{1}{8}$ " x WOF strips. Sub-cut twenty-four  $2\frac{1}{4}$ " x  $3\frac{1}{8}$ " rectangles (A).
- Cut two  $3\frac{1}{8}$ " x WOF strips. Sub-cut twenty-four  $2\frac{1}{2}$ " x  $3\frac{1}{8}$ " rectangles (D).
- Cut two  $2\frac{1}{4}$ " x WOF strips. Sub-cut twenty-four  $1\frac{7}{8}$ " x  $2\frac{1}{4}$ " rectangles (B) and twelve  $2$ " x  $2\frac{1}{4}$ " rectangles (E).
- Cut two  $4\frac{1}{2}$ " x WOF strips. Sub-cut twenty-four  $2\frac{1}{4}$ " x  $4\frac{1}{2}$ " rectangles (C).

*From Tonga-B5410 Crush:*

- Cut four  $3\frac{1}{8}$ " x WOF strips. Sub-cut sixty-four  $2\frac{1}{4}$ " x  $3\frac{1}{8}$ " rectangles (A).
- Cut two  $3\frac{1}{8}$ " x WOF strips. Sub-cut thirty-two  $2\frac{1}{2}$ " x  $3\frac{1}{8}$ " rectangles (D).
- Cut two  $4\frac{1}{2}$ " x WOF strips. Sub-cut twenty-four  $2\frac{1}{4}$ " x  $4\frac{1}{2}$ " rectangles (C).

*From Tonga-B4583 Bubblegum:*

- Cut two  $3\frac{1}{8}$ " x WOF strips. Sub-cut twenty  $2\frac{1}{4}$ " x  $3\frac{1}{8}$ " rectangles (A).
- Cut two  $3\frac{1}{8}$ " x WOF strips. Sub-cut twenty  $2\frac{1}{2}$ " x  $3\frac{1}{8}$ " rectangles (D).
- Cut two  $2\frac{1}{4}$ " x WOF strips. Sub-cut twenty  $1\frac{7}{8}$ " x  $2\frac{1}{4}$ " rectangles (B) and ten  $2$ " x  $2\frac{1}{4}$ " rectangles (E).
- Cut two  $4\frac{1}{2}$ " x WOF strips. Sub-cut twenty  $2\frac{1}{4}$ " x  $4\frac{1}{2}$ " rectangles (C).

*From Tonga-B4362 Blue:*

- Cut two  $3\frac{1}{8}$ " x WOF strips. Sub-cut twenty-eight  $2\frac{1}{4}$ " x  $3\frac{1}{8}$ " rectangles (A).
- Cut two  $3\frac{1}{8}$ " x WOF strips. Sub-cut twenty-eight  $2\frac{1}{2}$ " x  $3\frac{1}{8}$ " rectangles (D).
- Cut three  $2\frac{1}{4}$ " x WOF strips. Sub-cut twenty-eight  $1\frac{7}{8}$ " x  $2\frac{1}{4}$ " rectangles (B) and fourteen  $2$ " x  $2\frac{1}{4}$ " rectangles (E).
- Cut two  $4\frac{1}{2}$ " x WOF strips. Sub-cut twenty-eight  $2\frac{1}{4}$ " x  $4\frac{1}{2}$ " rectangles (C).

*From both Tonga-B6401 Grape and Tonga-B1564 Rio:*

- Cut four  $3\frac{1}{8}$ " x WOF strips. Sub-cut fifty-six  $2\frac{1}{4}$ " x  $3\frac{1}{8}$ " rectangles (A).
- Cut two  $3\frac{1}{8}$ " x WOF strips. Sub-cut twenty-eight  $2\frac{1}{2}$ " x  $3\frac{1}{8}$ " rectangles (D).
- Cut two  $4\frac{1}{2}$ " x WOF strips. Sub-cut twenty-one  $2\frac{1}{4}$ " x  $4\frac{1}{2}$ " rectangles (C).



*Imagination... Passion... Creativity*

*From Tonga-B6400 Pineapple:*

- Cut two 3<sup>1</sup>/<sub>8</sub>" x WOF strips. Sub-cut thirty-six 2<sup>1</sup>/<sub>4</sub>" x 3<sup>1</sup>/<sub>8</sub>" rectangles (A).
- Cut three 3<sup>1</sup>/<sub>8</sub>" x WOF strips. Sub-cut thirty-six 2<sup>1</sup>/<sub>2</sub>" x 3<sup>1</sup>/<sub>8</sub>" rectangles (D).
- Cut three 2<sup>1</sup>/<sub>4</sub>" x WOF strips. Sub-cut thirty-six 1<sup>7</sup>/<sub>8</sub>" x 2<sup>1</sup>/<sub>4</sub>" rectangles (B) and eighteen 2" x 2<sup>1</sup>/<sub>4</sub>" rectangles (E).
- Cut two 4<sup>1</sup>/<sub>2</sub>" x WOF strips. Sub-cut thirty-six 2<sup>1</sup>/<sub>4</sub>" x 4<sup>1</sup>/<sub>2</sub>" rectangles (C).

*From Tonga-B4882 Funhouse:*

- Cut four 3<sup>1</sup>/<sub>8</sub>" x WOF strips. Sub-cut seventy-two 2<sup>1</sup>/<sub>4</sub>" x 3<sup>1</sup>/<sub>8</sub>" rectangles (A).
- Cut three 3<sup>1</sup>/<sub>8</sub>" x WOF strips. Sub-cut thirty-six 2<sup>1</sup>/<sub>2</sub>" x 3<sup>1</sup>/<sub>8</sub>" rectangles (D).
- Cut two 4<sup>1</sup>/<sub>2</sub>" x WOF strips. Sub-cut twenty-seven 2<sup>1</sup>/<sub>4</sub>" x 4<sup>1</sup>/<sub>2</sub>" rectangles (C).

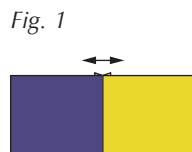
*From Tonga-B6398 Flame:*

- Cut two 3<sup>1</sup>/<sub>8</sub>" x WOF strips. Sub-cut twenty-eight 2<sup>1</sup>/<sub>4</sub>" x 3<sup>1</sup>/<sub>8</sub>" rectangles (A).
- Cut two 3<sup>1</sup>/<sub>8</sub>" x WOF strips. Sub-cut twenty-eight 2<sup>1</sup>/<sub>2</sub>" x 3<sup>1</sup>/<sub>8</sub>" rectangles (D).
- Cut two 2<sup>1</sup>/<sub>4</sub>" x WOF strips. Sub-cut twenty-eight 1<sup>7</sup>/<sub>8</sub>" x 2<sup>1</sup>/<sub>4</sub>" rectangles (B) and fourteen 2" x 2<sup>1</sup>/<sub>4</sub>" rectangles (E).
- Cut two 4<sup>1</sup>/<sub>2</sub>" x WOF strips. Sub-cut twenty-eight 2<sup>1</sup>/<sub>4</sub>" x 4<sup>1</sup>/<sub>2</sub>" rectangles (C).
- Cut eight 2<sup>1</sup>/<sub>2</sub>" x WOF strips for binding.

**Block Construction**

All seam allowances are 1/4" unless otherwise noted. Keep patches grouped by fabric combination.

1. Trace the template shape onto plastic template material. Cut out. Mark the dashed line onto the plastic.
2. Sew a 2<sup>1</sup>/<sub>2</sub>" x 3<sup>1</sup>/<sub>8</sub>" Pineapple D rectangle to a 2<sup>1</sup>/<sub>2</sub>" x 3<sup>1</sup>/<sub>8</sub>" Funhouse rectangle D along one short edge. Press the seam open. Repeat with remaining Pineapple D rectangles and Funhouse D rectangles (figure 1).



3. Separate the units from step 2 into two groups of eighteen. Lay the template on the right side of one unit aligning the upper edge with the top edge of the fabric and the dashed line with the seam, and the notched end on the Pineapple fabric. Trace the notched end and bottom of template onto the fabric and trim. Repeat to make a total of eighteen units with the notch on the right side (figure 2).
4. Flip the units from the remaining step 3 group so the Pineapple fabric is on the left and flip the template wrong side up. Position and trim as in step 3. Make a total of eighteen units with the notch on the left side (figure 2).

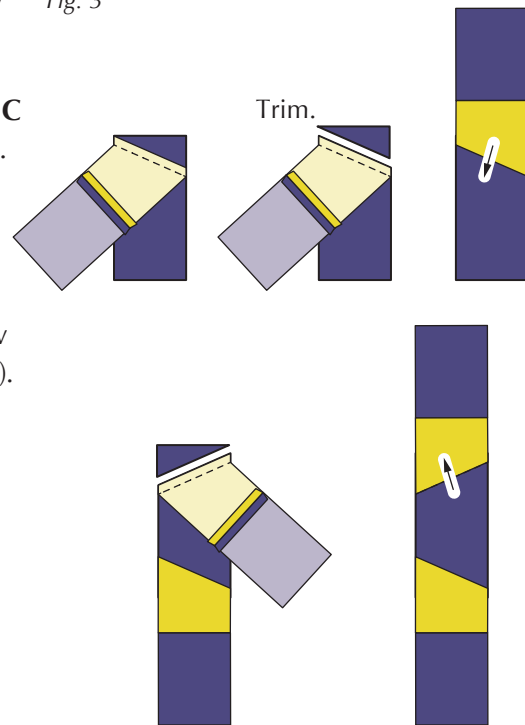
Fig. 2



Make 18 of each.

5. Following Figure 3, sew together the diagonal edge of the step 3 unit and one 2<sup>1</sup>/<sub>4</sub>" x 4<sup>1</sup>/<sub>2</sub>" Funhouse C rectangle as shown. Repeat with remaining Funhouse C rectangles. Press the seam toward the Funhouse C rectangle. Sew together a step 4 unit on the left side of a Funhouse C rectangle. Repeat with remaining Pineapple/ Funhouse units and Funhouse C rectangles. Make a total of eighteen units for Block Row 3 (figure 3).

Fig. 3



Row 3  
Make 18.

6. Following Figure 4, assemble the block rectangles in rows as follows (note the orientation of Row 3 and 5 units). Make a total of nine Pineapple/Funhouse blocks.

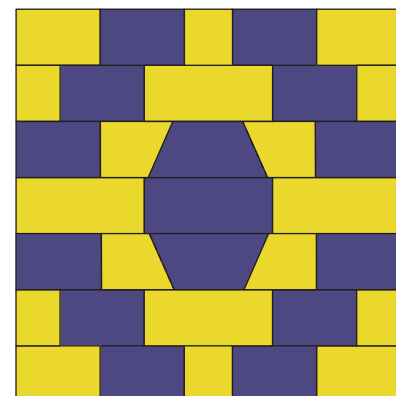
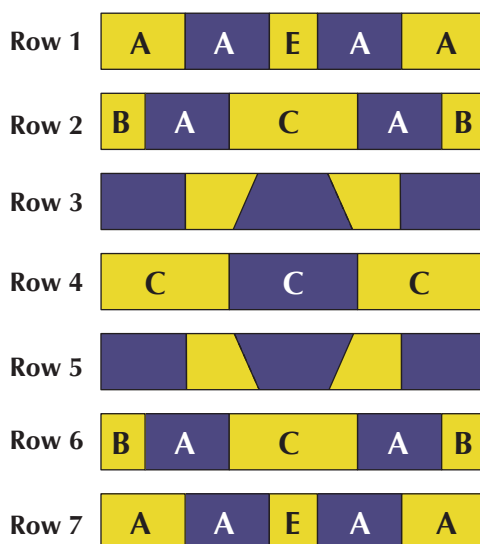
**Rows 1 and Row 7:** Pineapple A, Funhouse A, Pineapple E, Funhouse A, Pineapple A

**Rows 2 and Row 6:** Pineapple B, Funhouse A, Pineapple C, Pineapple A, Pineapple B

**Rows 3 and Row 5:** Step 5 unit

**Row 4:** Pineapple C, Funhouse C, Pineapple C

Fig. 4



**Pineapple/Funhouse Block**  
Make 9.

7. Repeat steps 1-6 to make the remaining blocks in the fabric combinations and quantities listed below:

Color Combinations	Number of Blocks
Flame/Grape	7
Blue/Rio	7
Royalty/Crush	8
Orange/Poppy	6
Bubblegum/Peapod	5

in alternate directions for adjacent rows. Sew the rows together in order, matching adjacent seams. Press seams in one direction.

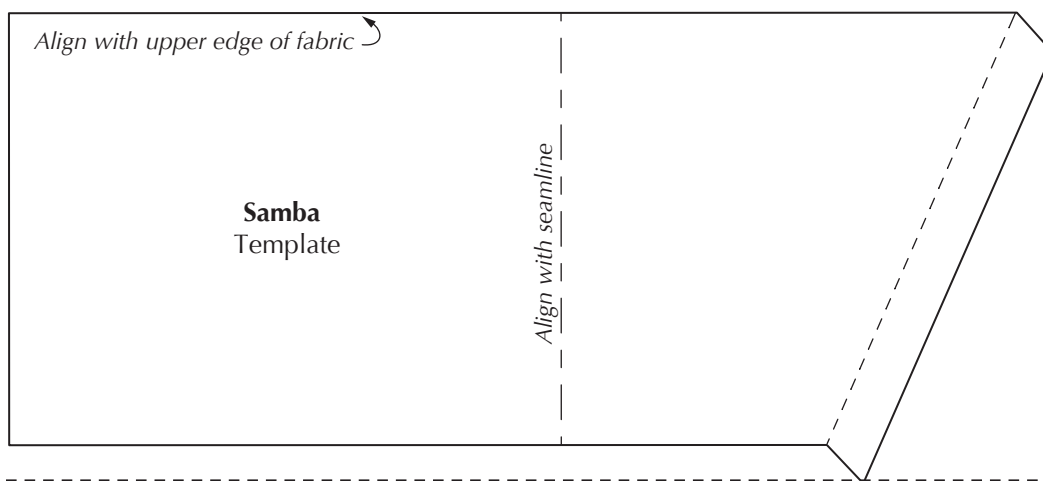
### Finishing

- Layer the quilt top, batting and backing and quilt as desired.
- Stitch the binding strips together end to end using diagonal seams. Fold and press the resulting long strip in half lengthwise with wrong sides together. Stitch to the quilt front, matching raw edges and mitering the corners.
- Fold the binding to the quilt underside and hand stitch the folded edge to the quilt back.

### Quilt Top Assembly

8. Referring to the quilt photo for placement and orientation, lay out seven rows of six blocks each. Sew together the blocks in each row, pressing seams

This square should measure 1" x 1" when printed.



Denise Russell  
www.piecedbrain.com  
©2018 Timeless Treasures  
www.ttfabrics.com  
This pattern is for individual home use only. This pattern may not be reproduced for commercial purposes (i.e., may not be sold).

